

RubbaDot Hammered Top Flooring Material Datasheet

Product Code: RUBBADOT

Product Description

Our RubbaDot rubber flooring contains a hammered texture top surface for efficient levels of grip without compromising on usability. It also features a speckled, multi-colour surface to create visually appealing flooring to suit any workplace. We supply this prange in a tile format with a slightly roughened underside to aide in adhesive bonding.

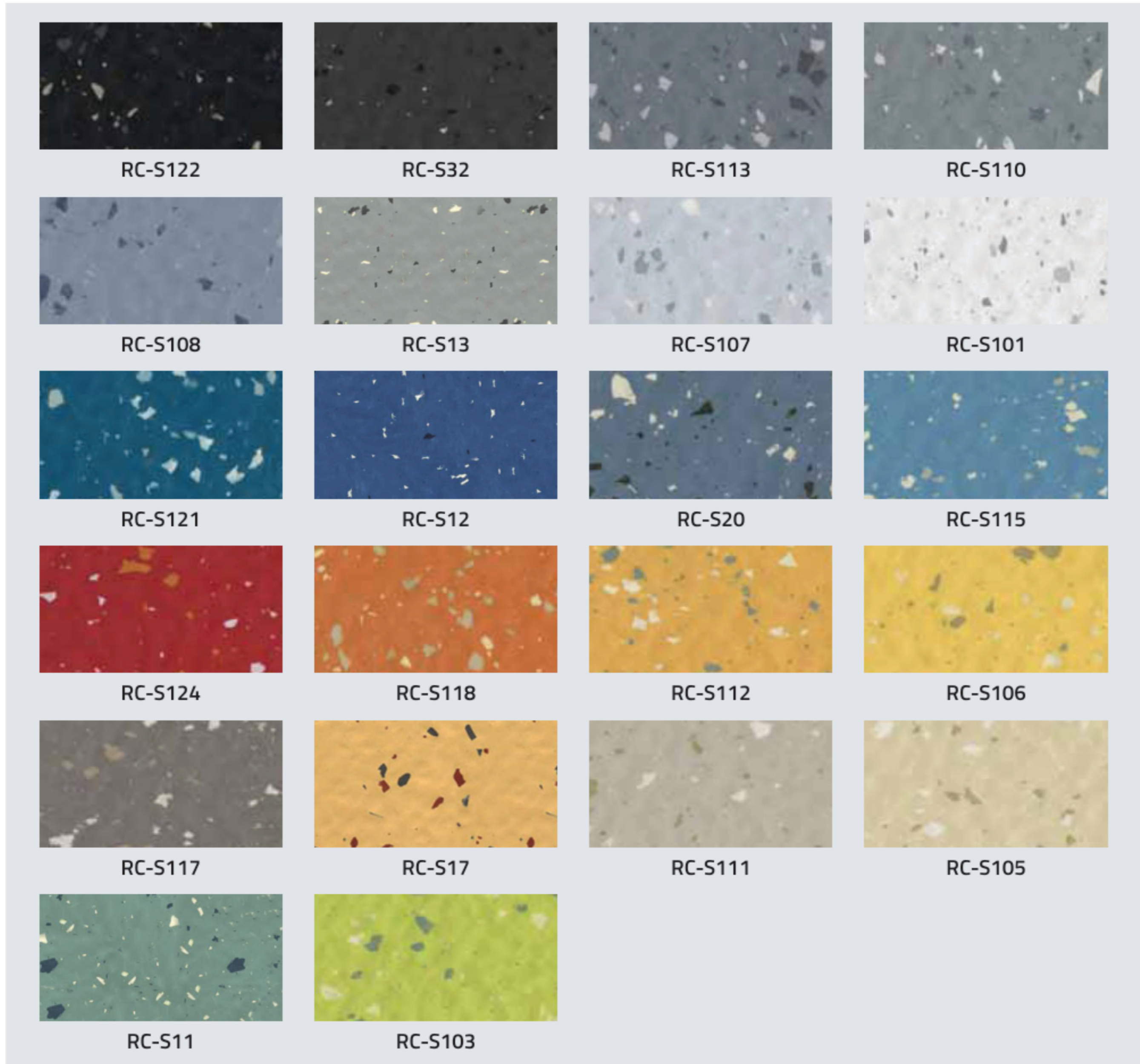


Technical Specification

Properties	Test Method	Requirements	Values		
			RC-DOTFLOOR-S	RC-DOTFLOOR-AUTO	RC-ARDESIA
Thickness	EN ISO 24346	± 0.15mm max	2.5mm	5mm	3.5mm
Hardness (Shore A)	EN ISO 7619-1	≥ 75° Shore A	88° ± 3°		
Abrasion Resistance (@ 5N Load)	ISO 4649	≤ 250mm ³	160 mm ³		
Residual Indentation	EN ISO 24343	< 2.5mm thickness	0.05mm	0.15mm	0.08mm
Dimensional Stability	EN ISO 23999	± 0.4%	± 0.3%		
Flexibility	EN ISO 24344	20mm dia mandrel	No fissuring		
Tear Strength	ISO 34-1	Mean value ≥ 20 N/mm	Pass	-	Pass
Colour Fastness	ISO 105-B02	At least level 6 on the blue scale; ≥ level 3 on the grey scale (=350 MJ/m ²)	Pass		
Cigarette Burn Resistance	EN 1399	Procedure A (stubbed out) level ≥ 4 Procedure B (burning) level ≥ 3	Pass		
Smoke Toxicity	BS 6853 Ann. B.2	≤ 5 R	Pass		
Classification	EN ISO 10874	Residential/Commercial/Industrial	23/32/42	23/34/43	
Thermal Conductivity	DIN 52 612	-	0.022 m ² K/W	0.030 m ² K/W	0.022 m ² K/W
Chemical Resistance	EN ISO 26987	-	Resistant depending on concentration and time of exposure		
Sound Absorption	EN ISO 10140-3	-	6 db	16 db	12 db
Electrical Insulation	IEC 60093	-	> 10 ¹⁰ Ohm		
Electrical Propensity (When Walked Upon)	EN 1815	-	Anti-static charging in case of rubber soles ≤ 2 KV		
Effect of Castor Chair	EN 425	-	Suitable for castor wheels type W, according to EN 12529		
Silp Resistance	EN 13 893	≥ 0.30 DS	DS		
Reaction to Fire	EN 13 501-1	-	Bfl - s1		

The information contained on this product information sheet is to be used as guidance. The advice is given in good faith and does not constitute any guarantee or recommendation for suitability. The Rubber Company cannot be held liable for any damage caused by incorrect installation. We hereby reserve the right to change the technical information herewith without notification or prior agreement.

RC-DOTFLOOR-S Size & Colour Specification

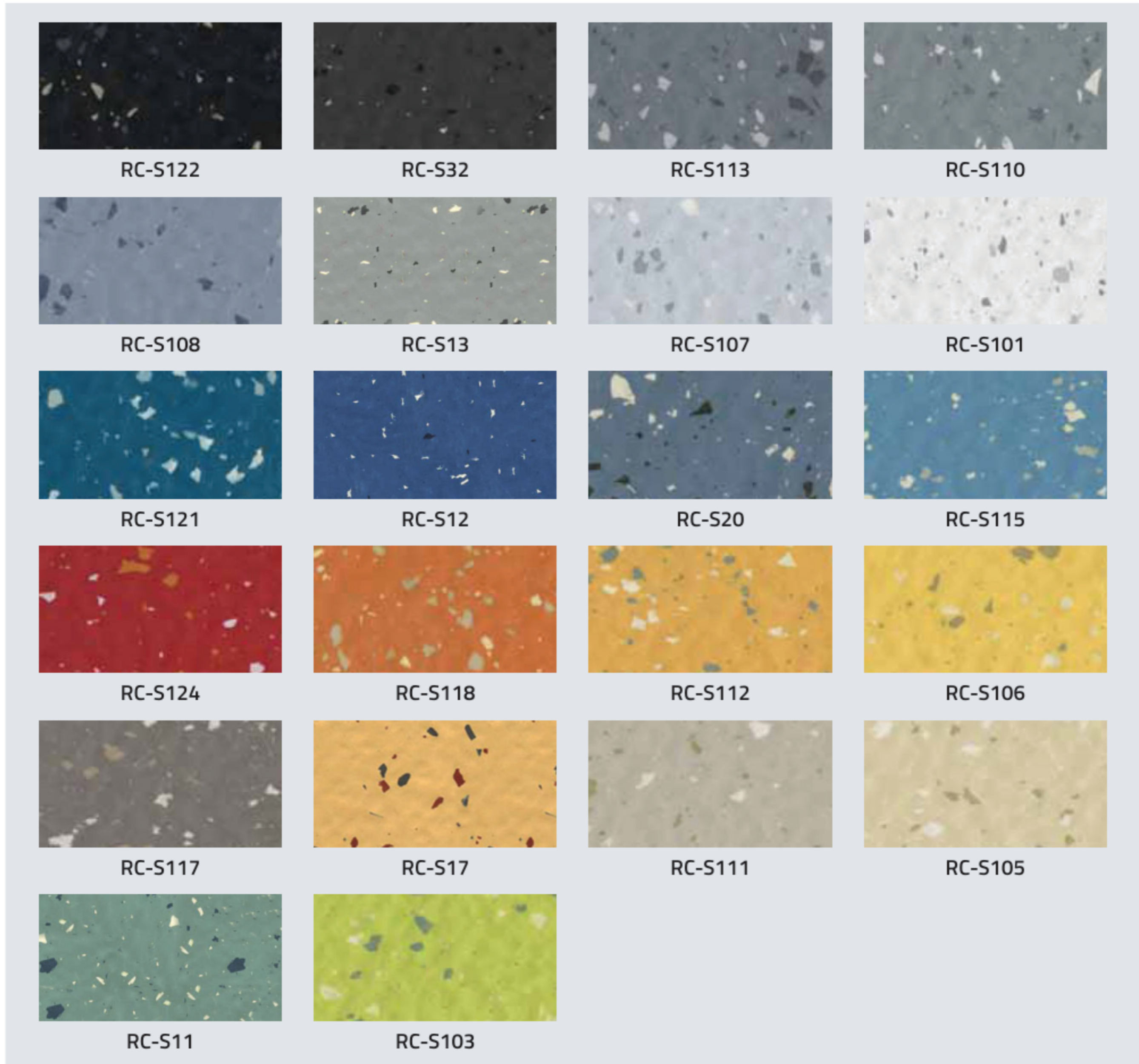


	Tile Size	500mm x 500mm 1000mm x 1000mm
	Thickness	2.5mm 3.5mm
	Weight	2.5mm @ 4.00 kg/m ² 3.5mm @ 5.50 kg/m ²



The information contained on this product information sheet is to be used as guidance. The advice is given in good faith and does not constitute any guarantee or recommendation for suitability. The Rubber Company cannot be held liable for any damage caused by incorrect installation. We hereby reserve the right to change the technical information herewith without notification or prior agreement.

RC-DOTFLOOR-AUTO Size & Colour Specification




Tile Size	500mm x 500mm
Thickness	5mm
Weight	8.00 kg/m ²

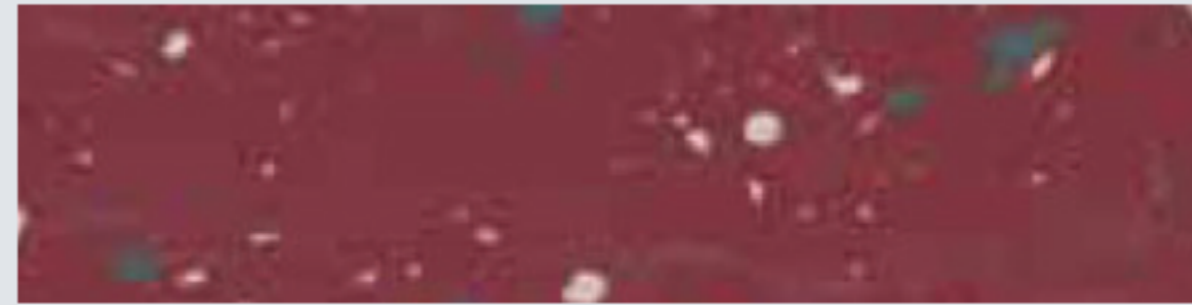


The information contained on this product information sheet is to be used as guidance. The advice is given in good faith and does not constitute any guarantee or recommendation for suitability. The Rubber Company cannot be held liable for any damage caused by incorrect installation. We hereby reserve the right to change the technical information herewith without notification or prior agreement.

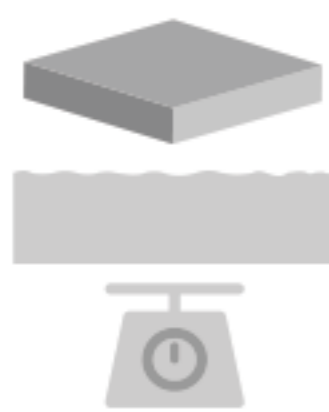
RC-DOTFLOOR-ARDESIA Size & Colour Specification



RC-AD32



RC-AD75



Tile Size	500mm x 500mm 1000mm x 1000mm
Thickness	3.5mm
Weight	5.40 kg/m ²



The information contained on this product information sheet is to be used as guidance. The advice is given in good faith and does not constitute any guarantee or recommendation for suitability. The Rubber Company cannot be held liable for any damage caused by incorrect installation. We hereby reserve the right to change the technical information herewith without notification or prior agreement.