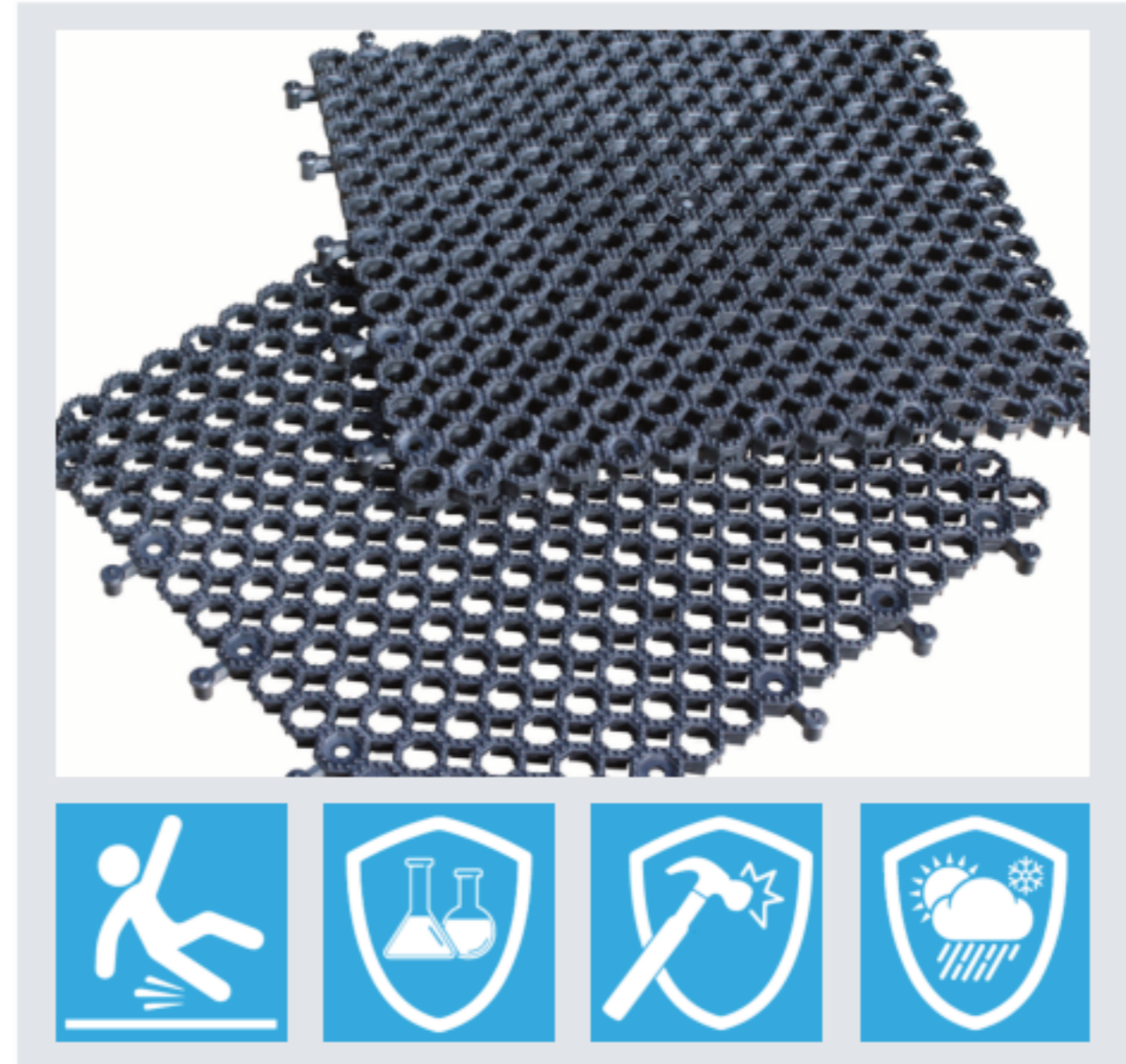


Easy Lock PVC Matting Material Datasheet

Product Code: RC04191

Product Description

Our Easy Lock PVC Matting features a highly durable, anti-slip top surface. The open cell design of the matting enables liquid and even large dirt and debris to quickly drain away from the surface. The top of the matting features a dimpled design, which serves to provide superior grip to most footwear types. Manufactured from 100% recycled material.



Size Specifications

Stock Sizes	Thickness	Weight (Kg/m ²)
0.5m x 0.5m	16mm	4.8

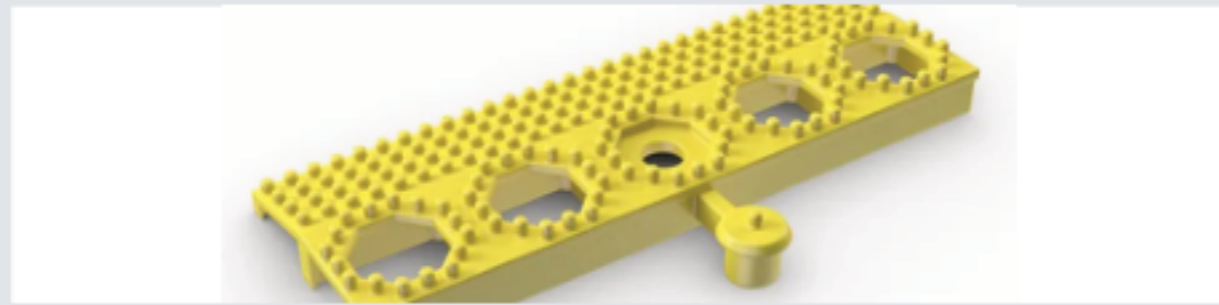


Technical Specification

Properties	Data
Product	Easy Lock Matting
Composition	Flexible Polyvinyl Chloride (PVC)
Acoustic Insulation	Excellent sound absorption properties
Chemical Resistance	Resistant to most acids, alkalines and oils
Temperature Range	-23°C to +60°C
UV Resistance	Resistant to PVC degradation
Reversion	Thermoplastic shrinkage can result in size reductions up to 2%
Hygiene	Naturally resistant to bacteria growth
Environment	100% recyclable

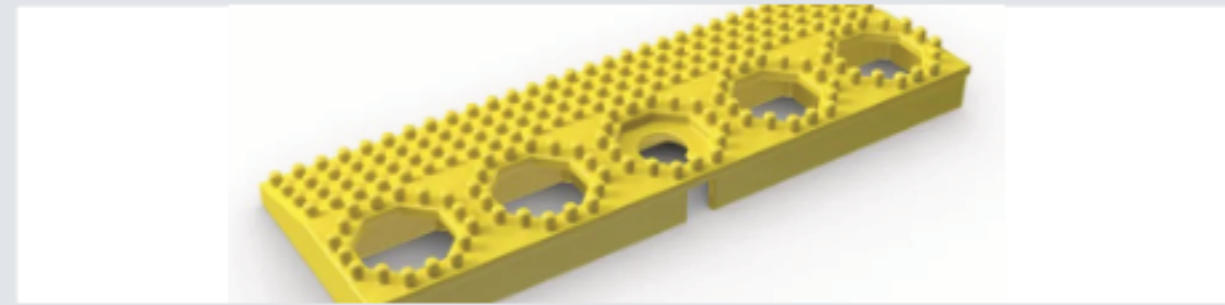
The information contained on this product information sheet is to be used as guidance. The advice is given in good faith and does not constitute any guarantee or recommendation for suitability. The Rubber Company cannot be held liable for any damage caused by incorrect installation. We hereby reserve the right to change the technical information herewith without notification or prior agreement.

Matting Ancillaries



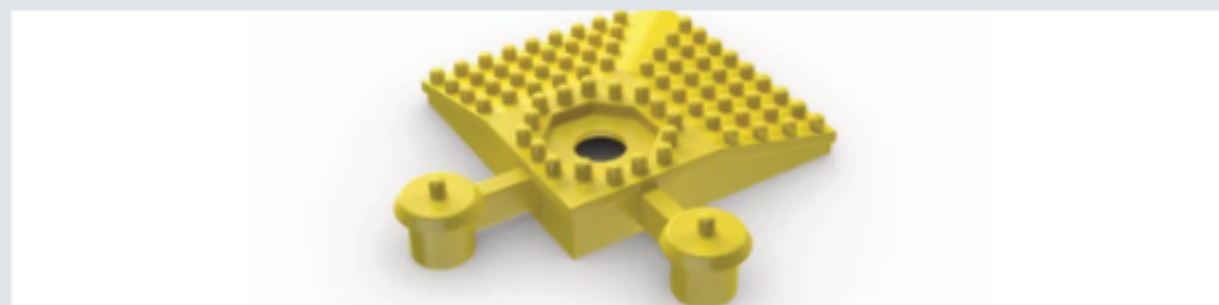
Easy Lock Edging (male)

Supplied in 50cm (1'8") lengths. Both male and female strips are available. Comes in black and yellow. Size: 12mm x 50mm x 50cm (1/2" x 2" x 1'8").



Easy Lock Edging (female)

Supplied in 50cm (1'8") lengths. Both male and female strips are available. Comes in black and yellow. Size: 12mm x 50mm x 50cm (1/2" x 2" x 1'8").



Easy Lock Ramped Corner

Comes in black and yellow. Size: 12mm x 50mm x 50mm (1/2" x 2" x 2")



Easy Lock Edging Connector Clips

For joining two ends of the edging together. One lug is supplied for every two pieces of edging in the relevant colour.

Matting Installation

Our Easy Lock PVC Matting interlocking system means installation is simple:

- Tiles easily and securely lock into place
- Effectively covers large areas
- No special tools needed

Cleaning & Maintenance

Keeping Easy Lock PVC Matting clean is a quick and easy job.

- Light to handle
- Simply lift to clean
- Easy to clean with a high pressure hose

The information contained on this product information sheet is to be used as guidance. The advice is given in good faith and does not constitute any guarantee or recommendation for suitability. The Rubber Company cannot be held liable for any damage caused by incorrect installation. We hereby reserve the right to change the technical information herewith without notification or prior agreement.