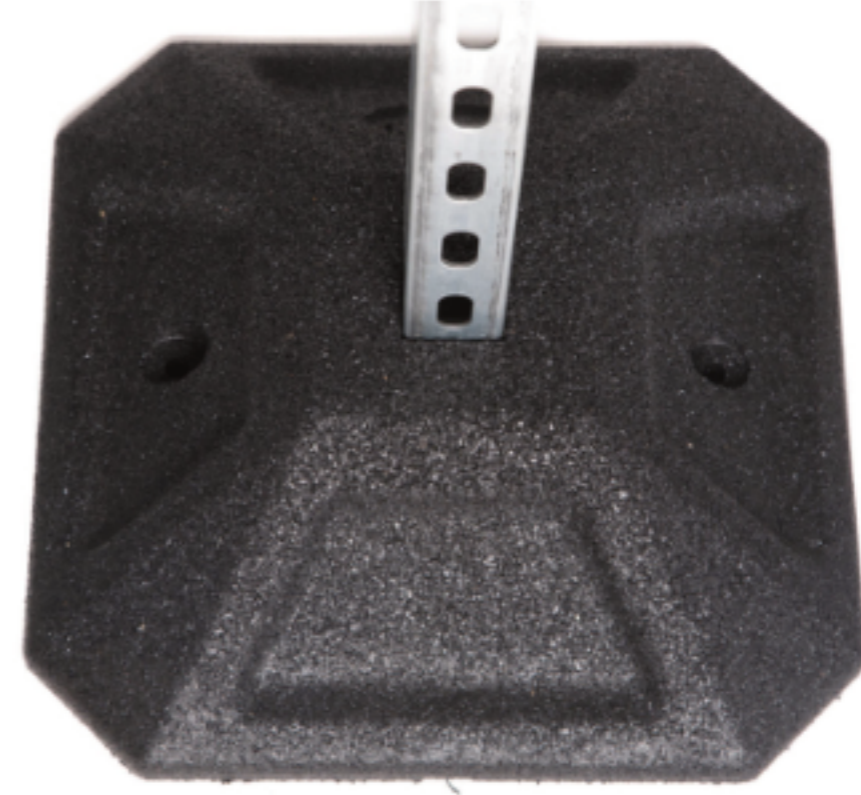


## H Frame Rubber Feet Datasheet

Product Code: RC12101

### Product Description

Our H Frame Rubber Feet are a quick, versatile and economical solution for supporting anything on your roof from pipe work, ductwork, cable trays and air conditioning equipment to plantrooms. They are manufactured from heavy duty recycled rubber and can be used over and over again.



### Technical Specification

Model	Foot Size (mm)	Max Loading per Foot (kg)	Weight per Foot (kg)	Load Bearing (Steel Plate)
Support Foot 350	350	200	5.2	95mm <sup>2</sup> x 4mm
Support Foot 350 - 12kg Heavy Ballast	350	200	12	95mm <sup>2</sup> x 4mm
2.5° Angle Foot 350	350	200	6.6	95mm <sup>2</sup> x 4mm
5° Angle Foot 350	350	200	7.2	95mm <sup>2</sup> x 4mm
Support Foot 500	500	250	12.9	160mm <sup>2</sup> x 4mm
Support Foot 500 - 12kg Heavy Ballast	500	250	6.1	160mm <sup>2</sup> x 4mm
2.5° Angle Foot 500	500	250	17.5	160mm <sup>2</sup> x 4mm
5° Angle Foot 500	500	250	25	160mm <sup>2</sup> x 4mm



The information contained on this product information sheet is to be used as guidance. The advice is given in good faith and does not constitute any guarantee or recommendation for suitability. The Rubber Company cannot be held liable for any damage caused by incorrect installation. We hereby reserve the right to change the technical information herewith without notification or prior agreement.